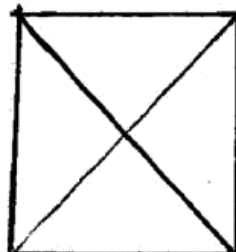
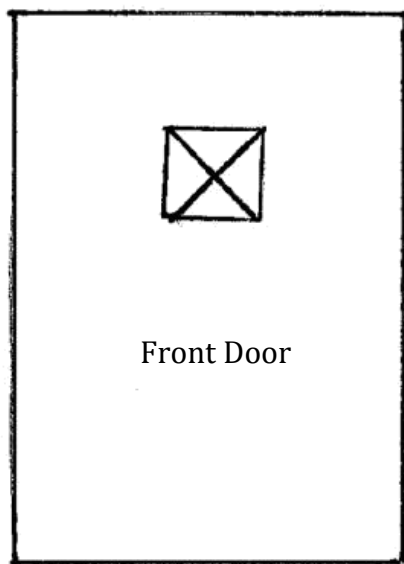
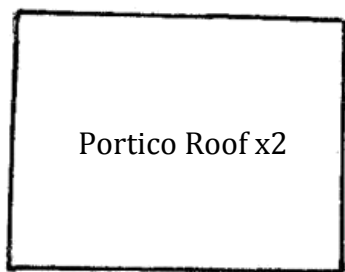
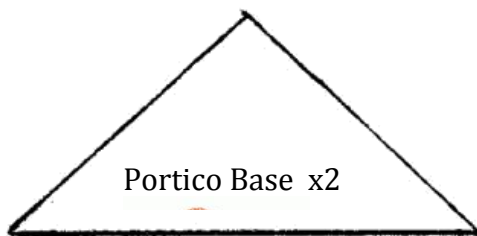
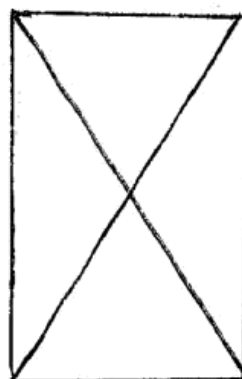
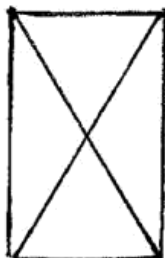
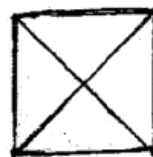


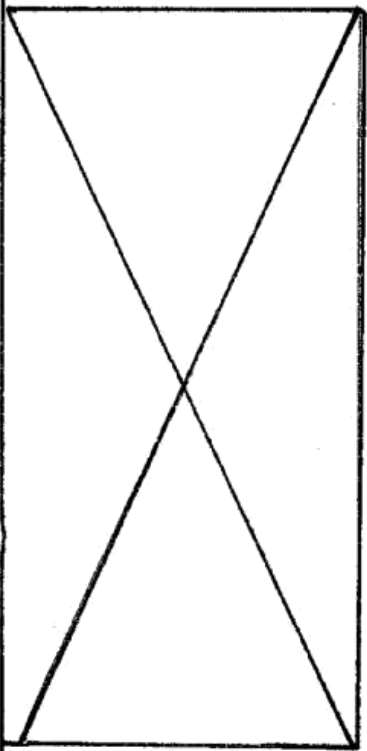
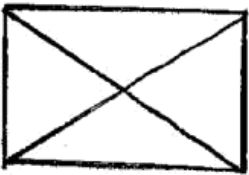
**Rose Hill Gingerbread Cottage  
Template  
Page 1 of 7**

Use an X-Acto to cut out boxes with an "X". You will also need to cut out 2-11 x 4 ¼ roof panels as well as a 2-19 x 8 rectangles that will form a base.

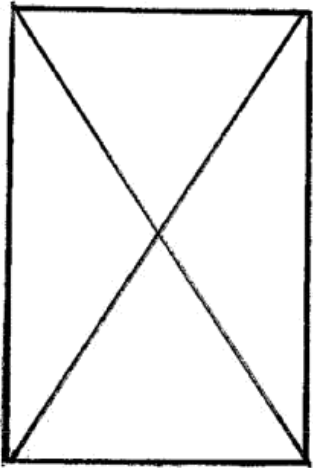


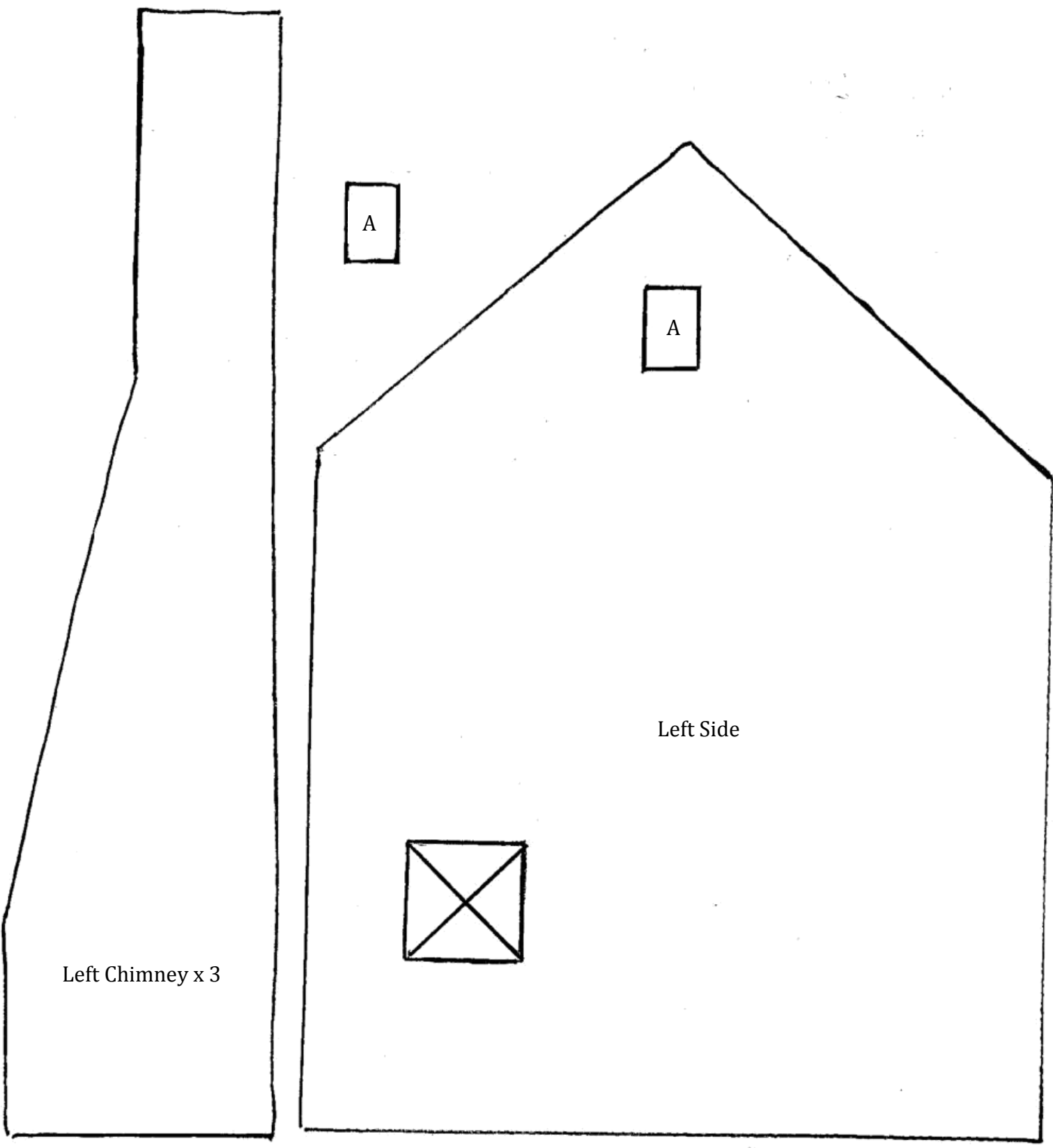
Front Facade

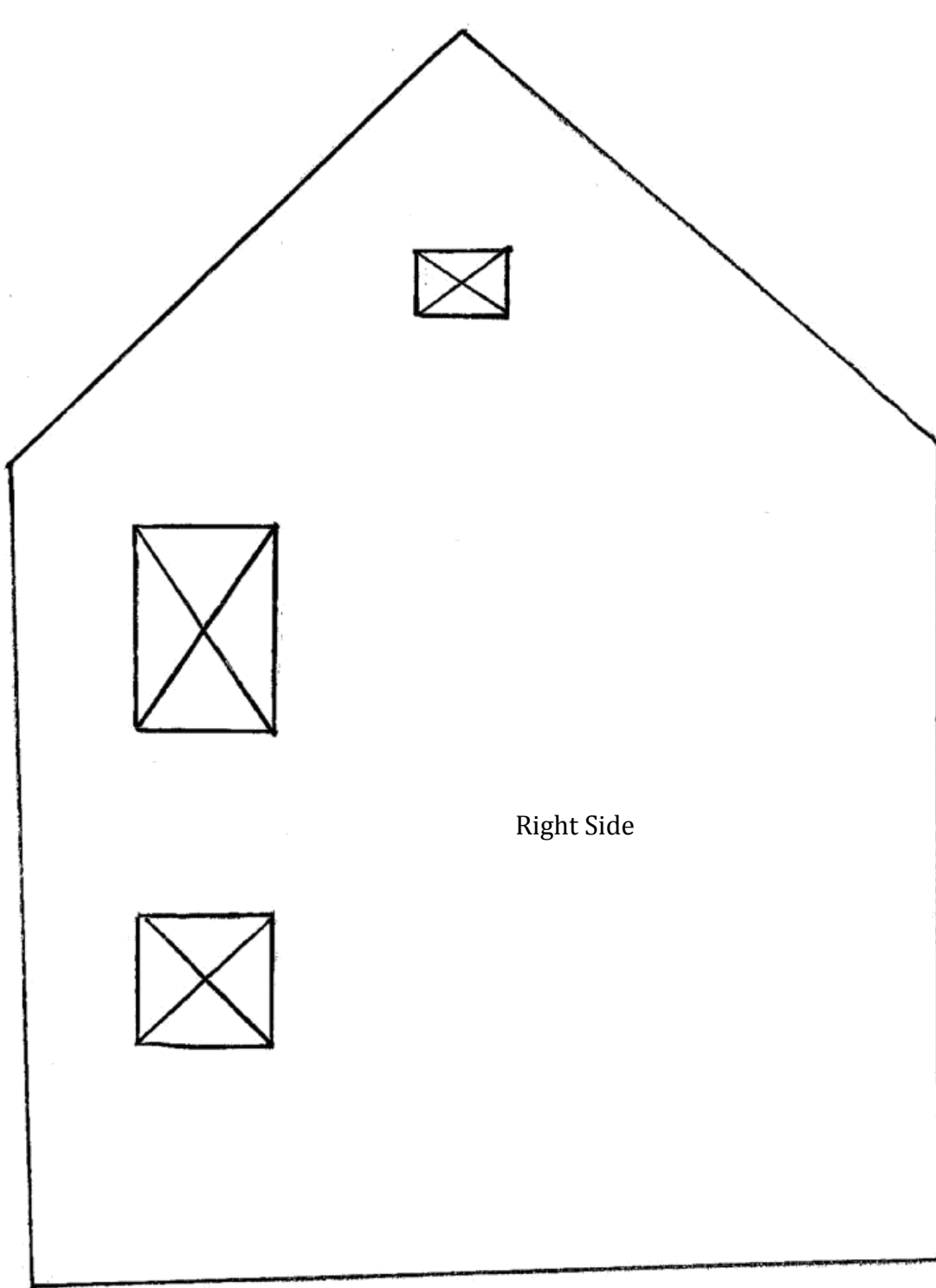




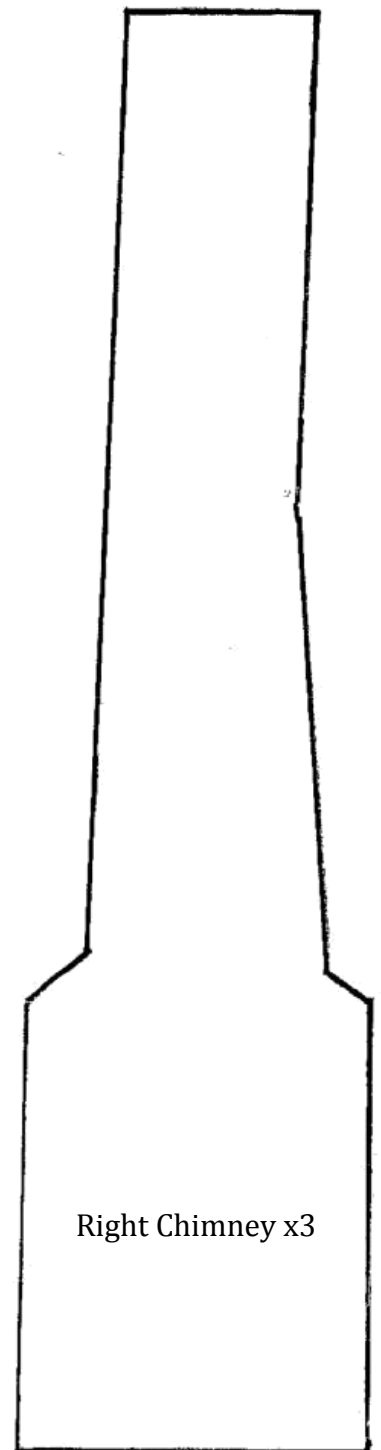
Back Facade



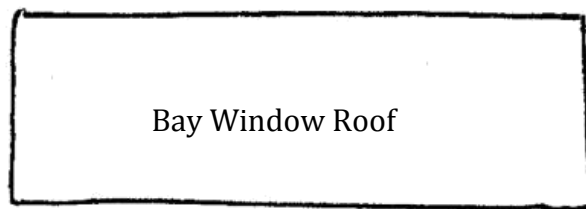
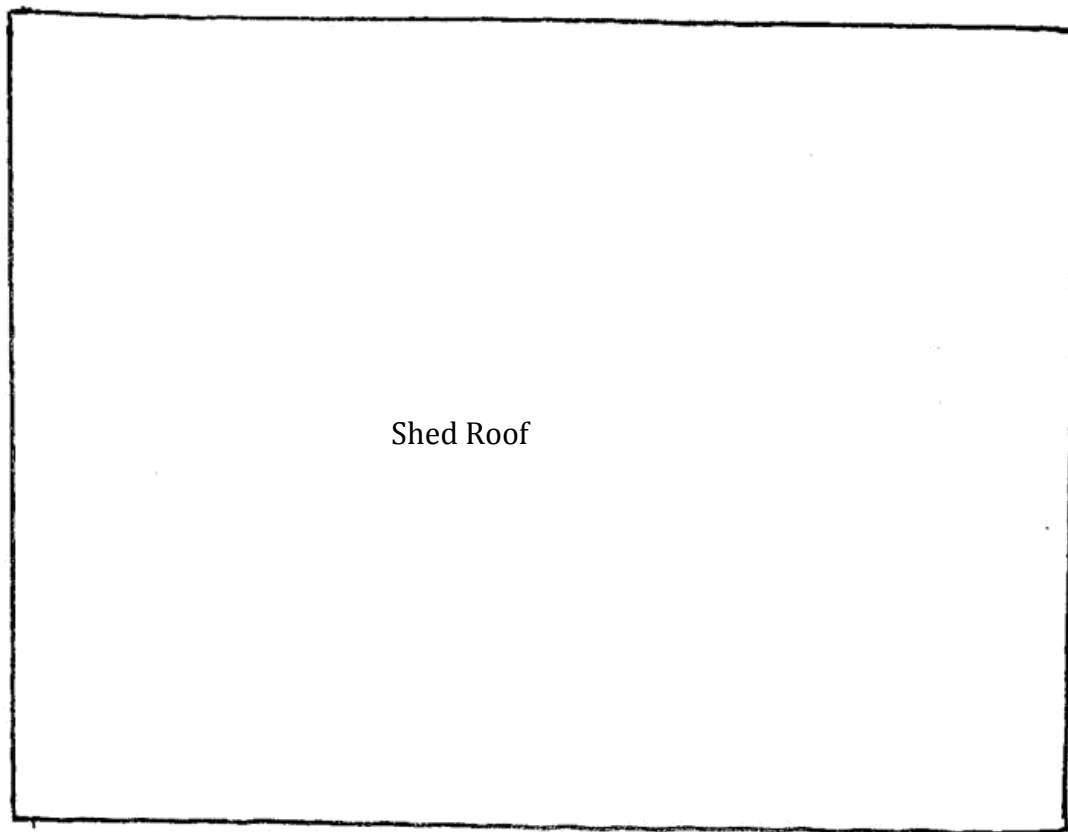




Right Side



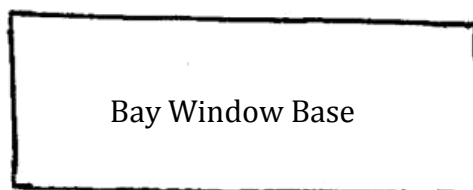
Right Chimney x3

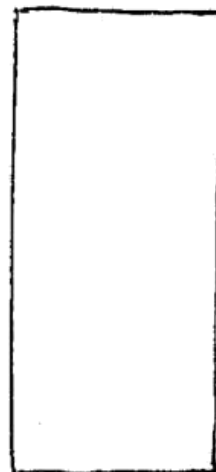
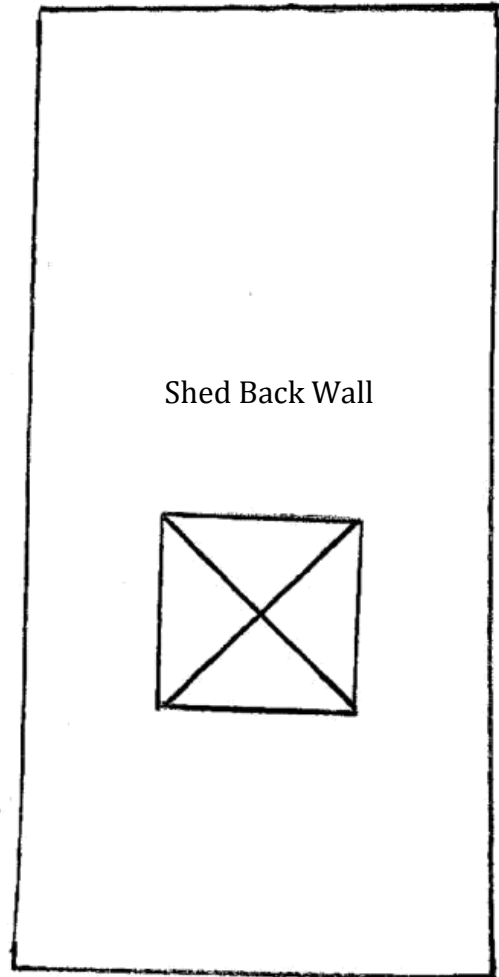
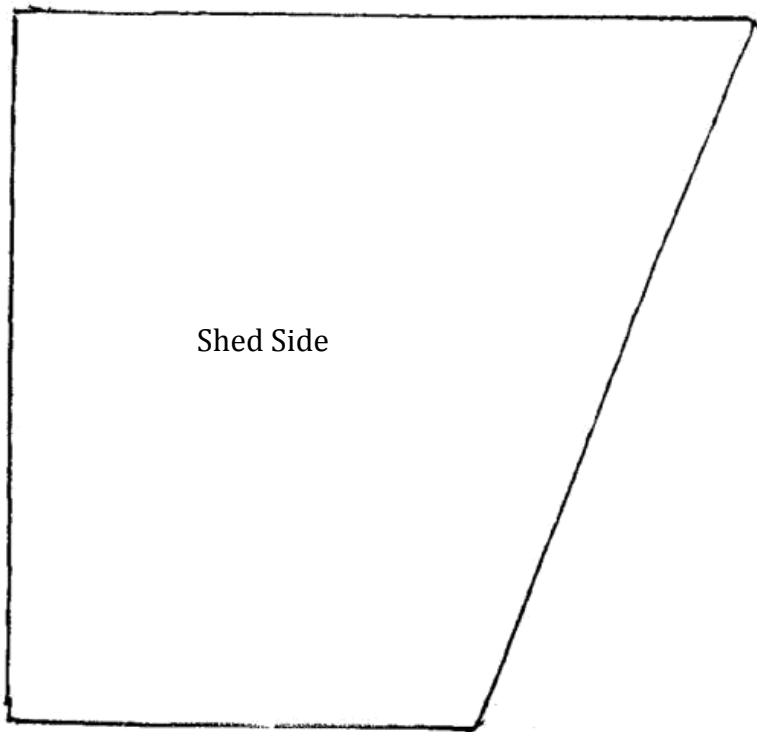
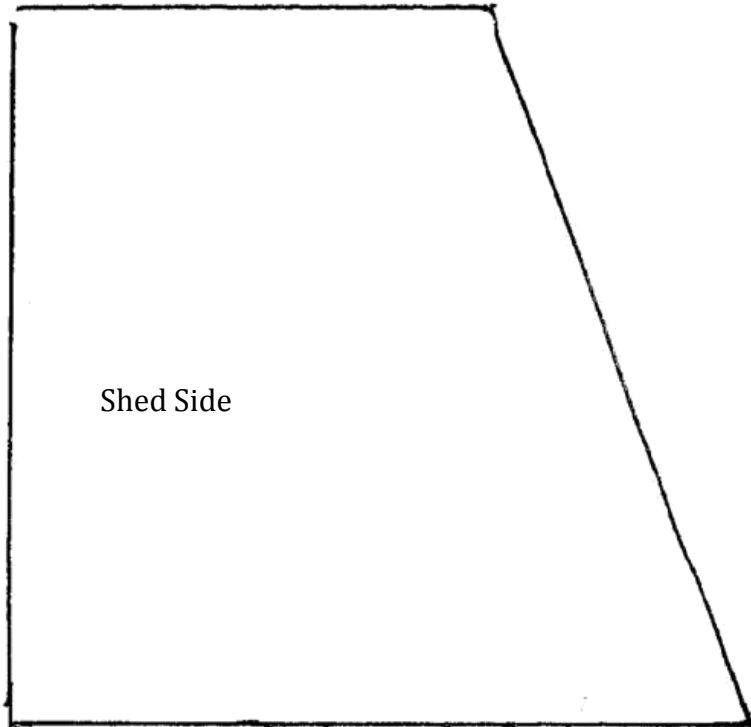


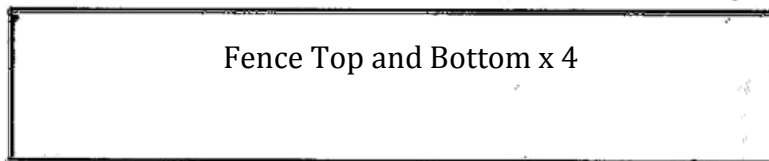
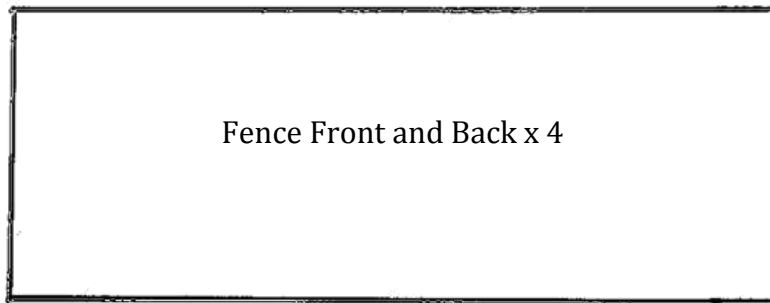
Bay Side



Bay Side







Fence Side x4



"Rose Hill Cottage" Sign

